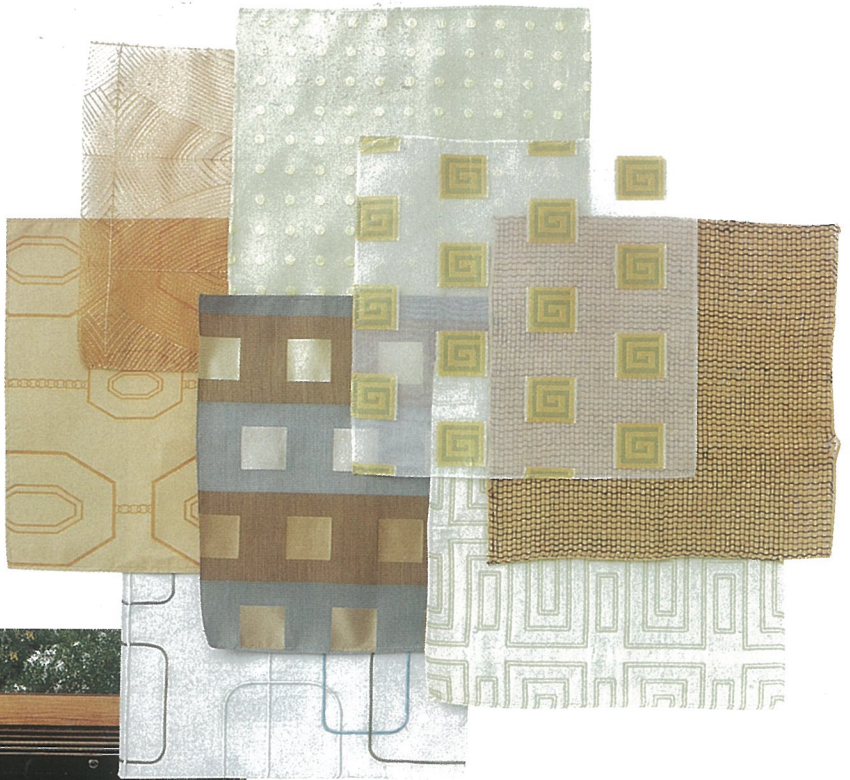


85 Material Man

• [MICHAEL BERMAN FOR KRAVET]

The Los Angeles-based designer, known for his soigné interiors, has created an urbane collection of fabrics for Kravet. *Modern Window* ranges from jacquards to damasks and flock linens, with inspiration taken from art, architecture and fashion. Many of the designs are inspired by midcentury geometric forms (through designers; Kravet.com). —EG



87 Prefabulous

• [THE KITHAUS ROOM ADDITION]

We love prefab—in theory. But the reality is that hidden costs often make it prohibitively expensive. Design Within Reach may have the answer. Its *Kithaus*, a 9-by-13-foot room addition by Tom Sandonato and Martin Wehmann, comes completely wired and insulated and doesn't require a foundation for flat sites (\$44,900 as shown, installed; DWR.com). —KEN

86 Making It Right

• [MATER]

With Mater, good design also means doing good. The Copenhagen company offers a range of refined products, such as Todd Bracher's *Dome* lamp (\$630) and the oak *High Stool* (\$950) by Space. But alongside design provenance comes accountability: Mater works with its manufacturers in China, India and Vietnam to improve conditions for workers, hiring outside auditors and posting the results online (Mater.dk). —AC

